



# FLAG News

Registered Charity Number: 1165681

Autumn 2017, Issue No. 37



## FLAG'S Notice Board Dates for your Diary 2017

- 26 October**  
Committee Meeting
- 2 November**  
Drop in
- 9 November**  
Drop in
- 16 November**  
Tea, Coffee, Cake Social Afternoon
- 23 November**  
Drop in
- 30 November**  
Committee Meeting
- 7 December**  
Drop in
- 14 December**  
Drop in
- 21 December**  
Christmas Tea, Coffee, Cake Social Afternoon
- 28 December**  
No FLAG meeting

## “Children in Need” Sponsored Word Search



This years **Children in Need** event is on Friday the 17<sup>th</sup> of November. **Kerry S** suggested that we do something to raise money for them. After a bit of a discussion we decided on a sponsored **WORD SEARCH**. It will be taking place at FLAG's Drop-in Afternoon on the 9<sup>th</sup> November. We will also be having a small raffle. If you would like to take part you will need a

"Sponsorship Form". You can either pick one up from FLAG on a Thursday afternoon or ring **Linda** on 07815 196357 and she will send you one. Once you have your form ask family and friends to sponsor you, then come along on the 9<sup>th</sup> November and do some **WORD SEARCHING**. All monies collected will go to **Children in Need**, not FLAG.

### In this Issue

Page 1	<i>Sponsored word search</i>
Page 2	<i>Mobility Hub-information</i>
Page 3	<i>Door to Door / The Vue</i>
Page 4	<i>Cream Tea Fundraiser</i>
Page 5	<i>Bletchley Park</i>
Page 6	<i>Bletchley Park. Dates for your diary</i>

## New "Mobility Hub" at Bedford Bus Station

Bedford has a new **Mobility Hub** located at the **Bus Station**. People with limited mobility will be able to hire a range of mobility equipment and access information about Community Transport services in the Borough.

The Hub is the result of a new agreement with Bedford Borough Council for BRCC to continue to provide Door to Door community transport services for people who have difficulty using or accessing public transport. The town centre mobility service will be delivered through a partnership with Bedford Shopmobility, which previously operated a mobility service from a unit in the Howard Centre.

The new **Mobility Hub** is situated in the former Travel & Tourism Centre at the **Bus Station**. It is the base for mobility services and information about Bedford Shop Mobility Services, Door to Door and other

Community Transport services.

### Nearest parking:

All Hallows or Greyfriars  
Bedford Bus Station,  
Thurlow Street, Bedford -  
Tel: 01234 348000.

### Shop Mobility charges:

#### Members

(£24 per year)

#### Electric scooters

£2 per day to hire

#### Wheelchairs

£1 per day to hire

#### Non members:

#### Electric scooters

£5 per day to hire

#### Wheelchairs

£2 per day to hire

### Opening hours:

10.30am to 2.30pm,  
Monday to Friday.



## Door to Door

Door to Door provides wheelchair accessible minibuses for people unable to use public transport in the Bedford area. All vehicles used are easy to access, for wheelchair users, all vehicles are fitted with a tail lift and staff can escort you to or from your door if needed

Journeys can be booked for Monday – Friday, 9:15am to 4:15pm. The booking line is open Monday to Friday 9:00am – 12:00pm to make journey bookings for the next

day (Friday for Mondays), on (01234) 832611. Advance bookings for specific health-related appointments can be made further in advance by contacting our enquiry line, between 9:00am – 4:00pm, on (01234) 834933. Price: £25 for the first year and £20 annually thereafter (Minimum charge per journey £2.50)

## Vue Cinema

I visited the new Vue cinema, which is easier for me to get to than Cineworld. When I visited I was quite surprised at how steep the steps went up, as a person with a walking disability I did not feel safe at all going up such steep steps, yes there is a hand rail on the far side, but that's it! Wouldn't it make more sense to have a hand rail in the middle? If you require a wheelchair space, there are special access boxes in each screen, these are accessible via a lift, my problem with this is they only cater for either 2 or 3 wheelchairs, which is not helpful if more people in wheelchairs want to see a



particular film, and this box is on the 2nd floor, not very good for seeing the film on the screen. The other place you could sit, again limited spaces is right at the front of the screen, where the reclining seats are, which costs extra money, or someone will go and get a chair for you from the corridor, but surely that is too close to the screen. Why could they not have put a few rows at the front or back, which are more accessible like other cinemas have. In my opinion the designer of this cinema should have thought more about their disabled customers.

By Linda Clements.



## Fundraising Cream Tea. 24th August 2017.

This was FLAG's annual Fundraising event held at Priory Methodist Church Newnham Avenue in the main hall which gave us sufficient space to move around and accommodate the Kempston Hammers Choir. About 70 people supported our fundraising event including FLAG Members, Volunteers, Friends and family. The room was set up for a traditional Cream Tea with lovely embroidered vintage table cloths place setting with vintage Jugs and Flower arrangements on the tables. When the room was full tea was served while the Choir sang for over an hour with **Peter Keens** playing the Keyboard.

It was a lovely social event with great atmosphere, every one appeared to enjoy themselves.

The afternoon ended with a raffle. All prizes had been donated to FLAG by various people and organisations.

We raised around **£431**. Well done to all who worked very hard to make the event a success. And a Big Thank you, to you all, on behalf of FLAG.



Gordon



Kempston Hammers Choir



Julie & Linda

The FLAG Committee would like to thank **Bernadette and Ros** for their hard work in making it the success it was.



**Bletchley Park trip.  
28th September 2017.**

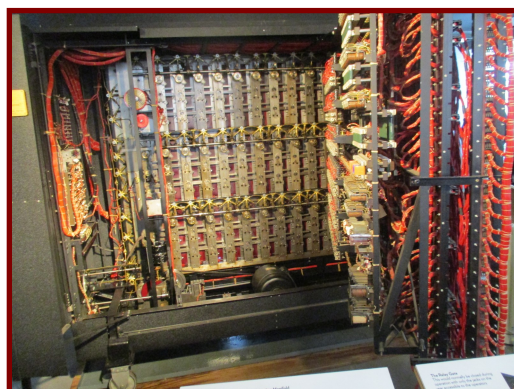
I had been looking forward to this trip for ages. We boarded the coach in Bedford and once again, Steve, our driver from Motts drove us the 20 miles to Bletchley Park. During World War Two Bletchley Park was the home of the “Codebreakers”. At the time it was extremely Top Secret.



Bletchley Park Mansion

Before and during the war the Germans used “Enigma” machines to communicate with each other in code. The machine had 159 million million million settings and so the Germans believed their codes were unbreakable. After a lot of hard work the people at Bletchley Park broke the first German Enigma Code in January 1940. They were then able to intercept and break more German communications which had a big influence on the outcome of the war.

We were given a demonstration of one of the codebreaking machines. I kept up for a while, but even though I have a bit of a maths brain I found it hard to understand. The people who worked there must have been geniuses and we owe them a great deal. I don't think this trip was for everyone but I found it fascinating and I thoroughly enjoyed it. By Tracey Brightman.





**FLAG'S  
Notice Board**

**Dates for your  
Diary 2018**

**4 January**  
Drop in

**11 January**  
Committee Meeting

**18 January**  
Tea, Coffee, Cake  
Social Afternoon

**25 January**  
Drop in



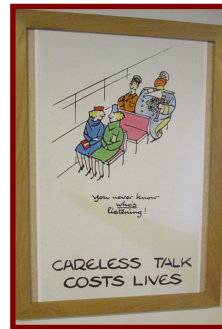
**FLAG Bedford**  
c/o Priory  
Methodist Church,  
63 Newnham  
Avenue,  
Bedford,  
MK41 9QJ.

Tel 07815 196357

**Bletchley Park trip.**



**Carole & Lance**



**Gordon**

Bletchley Park today, is a heritage site which preserves the story of the "Codebreakers" during WW2.

**Fundraising Events  
2017.**

**4 November**

Autumn Fair at Priory  
Methodist Church.  
10:00am - 2:00pm.

**9 November**

Children in Need sponsored  
Word Search at  
Priory Methodist Church.  
2:00pm - 4:00pm.

**18 November**

St Pauls Church Fair.

**6 - 10 December**

Christmas Tree  
Festival at St Pauls Church.  
10:00am - 5:00pm,  
12.00am - 4:00pm (Sun)  
Entry £2.50

**FLAG Events  
2017/18.**

**15 November**

Quiz Night / Buffet  
at the White Horse.  
(Evening).

**13 December**

Christmas Meal  
at Bedford Athletic Rugby  
Club, Wentworth Drive.  
(Evening).

**12 February 2018**

Houses of Parliament.  
(Day trip).

